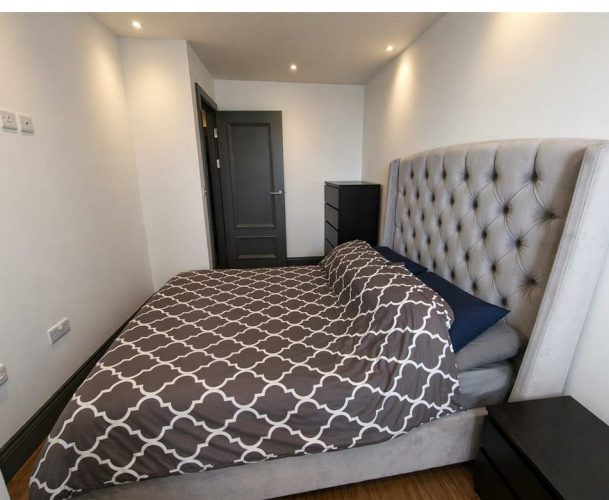


APT 19 Great Minster House, Lister Hill Horsforth, Leeds,  
LS18 5FD  
£1,050 Per month

**V&L**  
PROPERTIES



# APT 19 Great Minster House, Lister Hill Horsforth, Leeds, LS18 5FD

£1,050 Per month

Council Tax Band: B

Nestled in the charming area of Lister Hill, Horsforth, Leeds, this purpose-built apartment offers a delightful living space perfect for individuals or couples seeking a comfortable home. The property features a well-appointed reception room that provides a welcoming atmosphere, ideal for relaxation or entertaining guests.

The apartment boasts a spacious bedroom, designed to be a tranquil retreat, ensuring a restful night's sleep. The bathroom is thoughtfully designed, offering both functionality and comfort.


Horsforth is known for its vibrant community and excellent amenities, including local shops, cafes, and parks, making it an attractive location for those who appreciate a blend of urban convenience and suburban charm. With good transport links, residents can easily access the wider Leeds area, enhancing the appeal of this lovely apartment.

This property presents a wonderful opportunity for anyone looking to enjoy a modern lifestyle in a sought-after location. Whether you are a first-time buyer or seeking a rental investment, this apartment is sure to impress.





22 Regent Street  
 Leeds  
 LS2 7QA  
 01133 225737  
[info@vgl-properties.co.uk](mailto:info@vgl-properties.co.uk)  
[vgl-properties.co.uk](http://vgl-properties.co.uk)

| Energy Efficiency Rating                           |         |   |
|--|---------|---|
|  | Current | Potential   |
| <i>Very energy efficient - lower running costs</i> |         |   |
| (92 plus) <b>A</b>                                 |         |   |
| (81-91) <b>B</b>                                   |         |   |
| (69-80) <b>C</b>                                   |         |   |
| (55-68) <b>D</b>                                   | 65      | 65  |
| (39-54) <b>E</b>                                   |         |   |
| (21-38) <b>F</b>                                   |         |   |
| (1-20) <b>G</b>                                    |         |   |
| <i>Not energy efficient - higher running costs</i> |         |   |
| <b>England &amp; Wales</b>                         |         | EU Directive 2002/91/EC  |